

D2 INNOVATION

D2Map™ Enterprise

Product descriptions



D2Map™ Enterprise

디투맵 엔터프라이즈

Spatial information has been used in various ways in society in the quickly evolving world. D2Map connects you to a variety of information in the digital spatial world.



D2Map™

디투맵™ 솔루션

D2Map solution perfectly supports common battlefield awareness and communication between joint operations in a variety of military missions, thoroughly visualizes battlefield data, and analyzes geographical features.



The logo for D2Map, featuring the text 'D2Map' in a stylized font with a trademark symbol. The 'D2' is in white and 'Map' is in red. The background of the entire image is a composite of three maps: a top-left map of South Korea with various colored overlays and labels, a top-right map of a coastal region with a grid overlay, and a bottom map showing a 3D globe with red lines connecting various points on the surface.

D2Map™

D2Map provides the target intelligence property and common military symbol function for quickly marking a variety of information acquired through diverse means on the command and control system in real time

D2Map™

Illustration of information

Means of collecting information

Spatial information analysis

COP support

link to C4I

Predictive support

For enabling commanders and chief officers in the command post to plan using a variety of event maps visualized on the basis of the wide range of information in the command and control system, D2Map provides diverse operational symbols and visualization functions.

For effective mobilization, surveillance, and attacks required to perform combat operations, D2Map provides a wide range of battlefield information analysis functions, including visibility range and gradient for operators in the command post to analyze diverse battlefield information.

D2Map provides simulation functions, including powerful algorithm-based route analysis and damage estimation in order to support the command post to plan actions against events and to predict and be ready for various kinds of provocations and threats in real time.

D2Map™ Enterprise

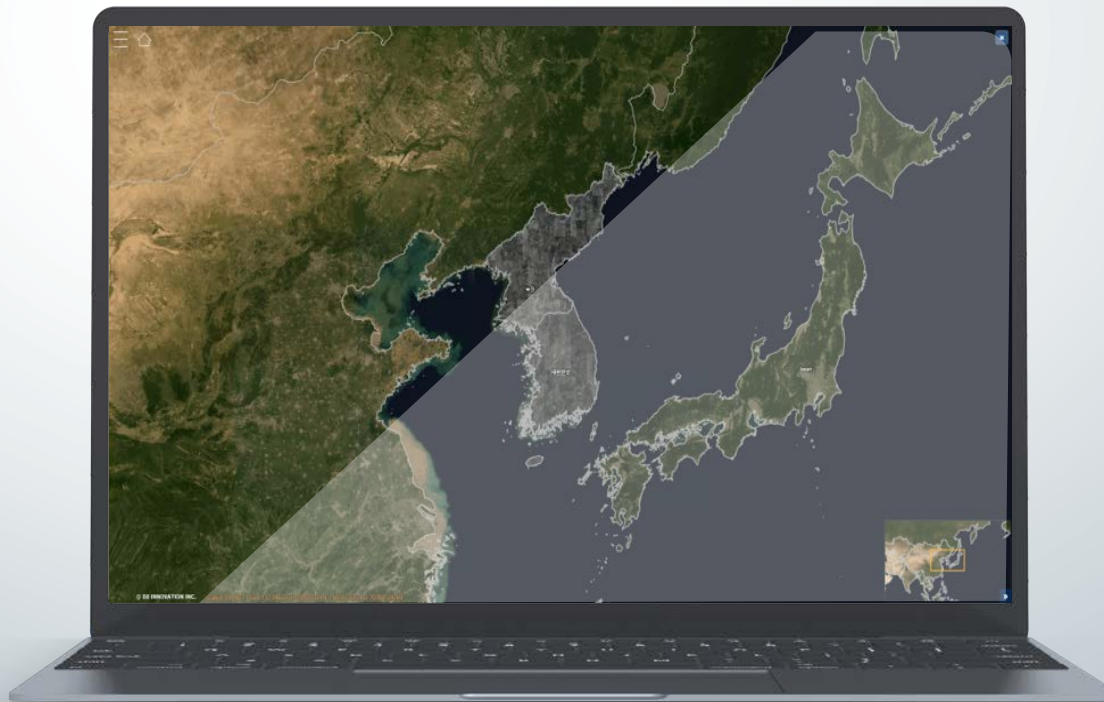
디투맵 엔터프라이즈



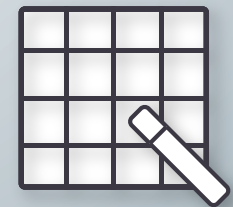
D2Map Server



D2MapEarth for Web



D2Map for Web



D2Map Tile Maker

D2Map stably supports massive spatial information
on the basis of powerful GIS Architecture.

D2Map includes a web GIS Server, 2D GIS solution,
Globe 3D Solution, and a professional tiling tool.

D2Map™ Server

디투맵 서버

D2Map Server provides web GIS server solutions enabling quick and stable service for bulk spatial information.



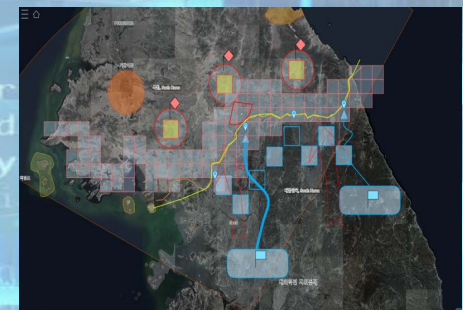
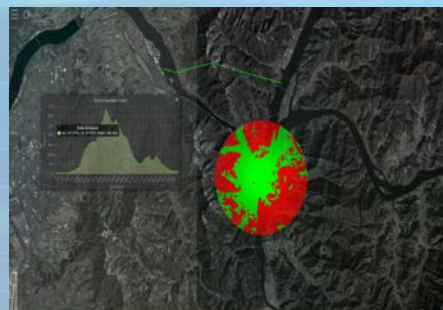
Functions

- Provides a stable web server service in the online environment
 - Creates high-resolution maps with massive topographic data
 - Optimum/shortest path finding algorithm connected to a standard topography operating system, mounted
 - Provides 3D topographic data by reflecting the altitude data of objects, including nature and buildings
-

D2Map™ for Web

디투맵 포 웹

D2Map for Web provides stronger and lighter 2D GIS solutions in the web environment.



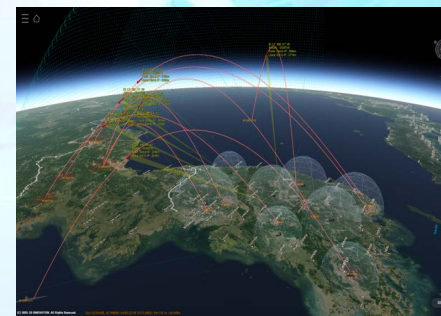
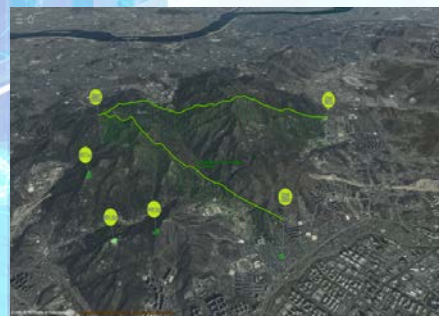
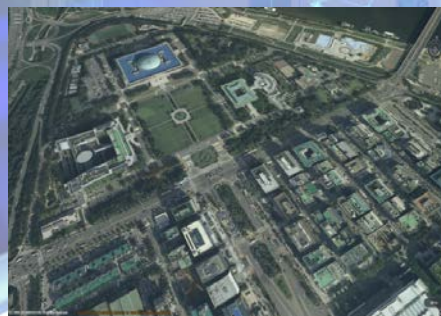
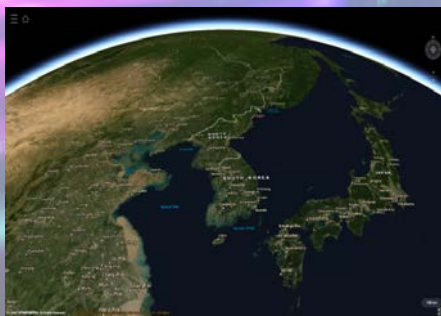
Functions

- 2D topography engine system using spatial data
- Quickly provides coordinate data on the accurate point on the map
- A variety of visualization processing function, including images, and symbols, mounted
- Supports interface and convenience features implementing a variety of requests
- Provides optimized functions for national defense, including military symbols and preparation overlays

D2MapEarth for Web

디투맵어스 포 웹

D2MapEarth for the Web provides powerful 3D GIS solutions supporting high quality 3D resolution on the web environment.





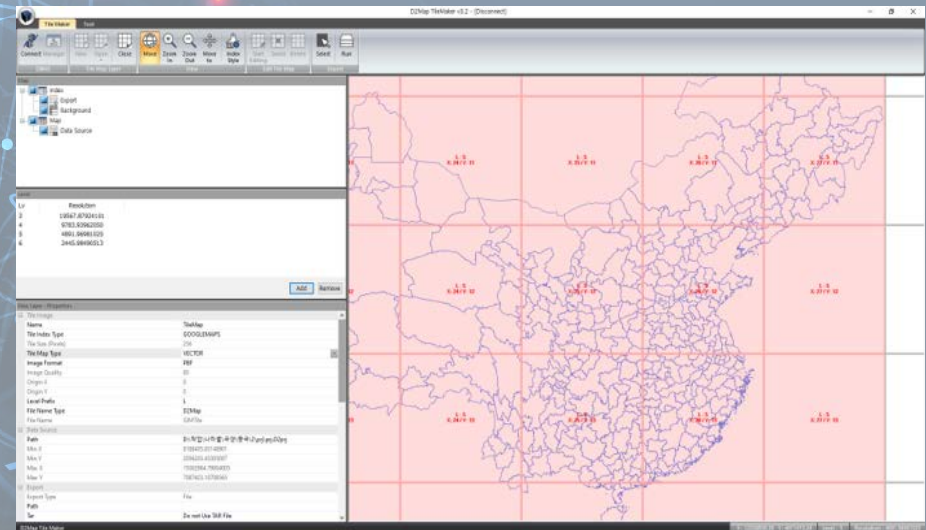
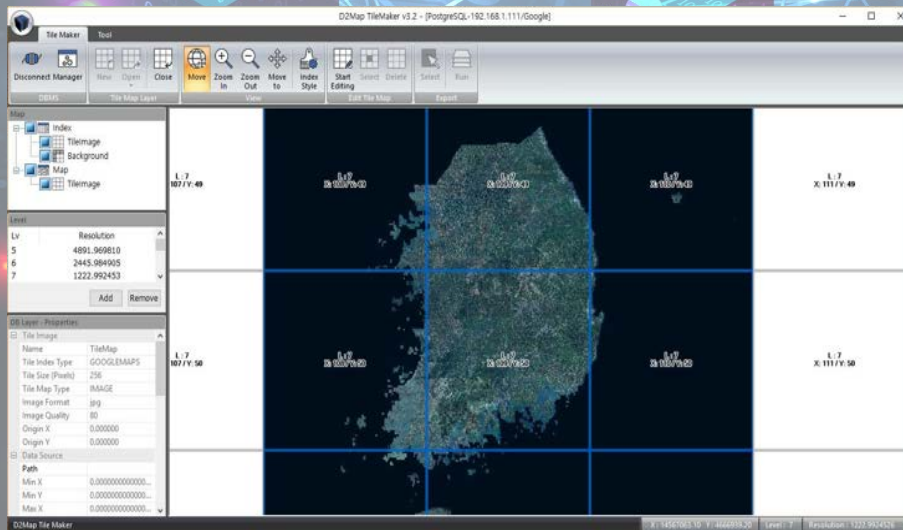
Functions

- 3D topography engine system using spatial data
 - Quick rendering using an optimized support terminal
 - Quickly provides coordinate data on the accurate point on the 3D map
 - A variety of visualization processing functions, including images and symbols on a 3D map, mounted
 - Provides optimized functions for national defense, including military symbols and preparation overlays
-

D2Map Tile Maker

디투맵 타일 메이커

D2Map Tile Maker provides professional tile map creation tools for D2Map and Earth for Web service.



Functions

- Facilitates data management by creating tile maps
 - Secures quick searching and stability by tile map management, using the patented technology of the Company.
 - Technology compacting massive topographical data (reducing data size by over 70% as compared to the existing system)
-

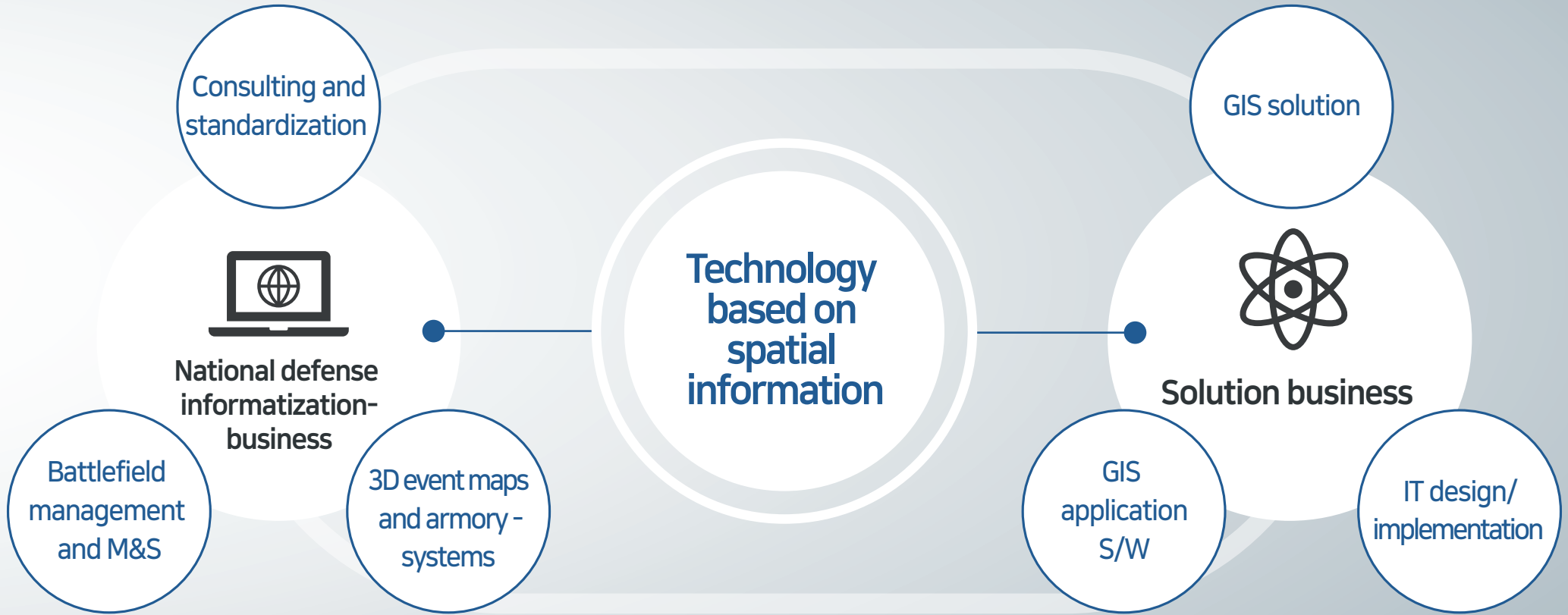
D2INNOVATION

디투이노베이션

D2 INNOVATION Co., Ltd. provides the quality GIS service to cope with a variety of demands from the national defense and public safety fields using the technology based on spatial information.



D2 INNOVATION





D2 MapTM

D2 INNOVATION